

New Mexico Network for Women in Science & Engineering
 2015 Annual Meeting & Technical Symposium (AM 2015)
 Sierra Grande Lodge and Spa, Truth or Consequences, NM
 23-25 October 2015
<http://nmnwse.org/AM/2015>



AM 2015 Schedule (Draft – Subject to Change)

Friday, Oct 23th

6:00 – 9:00 pm La Casita, Sierra Grande Lodge (SGL) Registration and Opening Reception^(a)

Saturday, Oct 24th

9:00 am La Casita, SGL Business Meeting^(b)

12:00 pm On your own Lunch^(a)

1:30 pm Geronimo Springs Museum Featured Event: Tour of Geronimo Springs Museum^(c,e)

3:30 pm Meeting Room, SGL Featured Speakers: Diane Oyen and MyChelle Andrews

5:00 pm Meeting Room, SGL Technical Poster Session^(e)
 (wine & cheese reception)
 * post-deadline poster abstracts accepted!

6:30 pm Meeting Room, SGL Dinner^(a): Welcome

7:30 pm Meeting Room, SGL IMPACT Award Presentation

7:40 pm Meeting Room, SGL Featured Speakers^(c):
 Dr. Martha Mitchell, Associate Dean - College of Engineering and Chemical Engineer, NMSU

9:00 pm Adjourn

Sunday, Oct 25th

8:30 am La Casita, SGL First Board Meeting with Elected Officers^(e)
 (snacks provided)

11:00 am Adjourn

Notes:

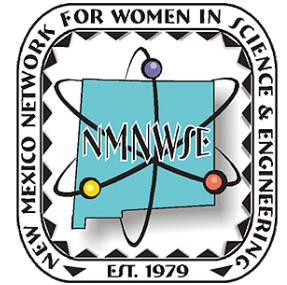
- ^(a) Saturday dinner, the receptions, and snacks, are included with your registration. Breakfasts are on your own (but included with SGL room). Lunch is on your own.
- ^(b) Saturday Business Meeting Agenda on page 2.
- ^(c) See page 5 for event details and abstracts.
- ^(d) Sunday Board Meeting Agenda on p. 3. All NMNWSE members are welcome to attend. Continuing and newly elected board members should plan to attend.
- ^(e) Maps and location details on page 4.

New Mexico Network for Women in Science and Engineering

2015 Annual Business Meeting – Draft Agenda (Subject to Change)

Date: 9:00 am, Saturday, October 24, 2014

Place: Sierra Grande Lodge, Truth or Consequences, NM



2014-15 OFFICERS:
 President - Phyllis Baca
 Vice President - vacant
 Treasurer - Jeanne Banks
 Secretary - Claudia Barreto

Note: Reports should summarize entire year. Gavel will pass to 2015-16 President after the Election. All new and current members are encouraged to attend.

9:00 am	<u>Topic</u>	<u>Presenter</u>
	Call to Order	Phyllis Baca
	Election of 2015-16 Officers	Yolanda King
9:30 am	Secretary's Annual Report	Claudia Barreto
	Treasurer's Annual Report	Jeanne Banks
	Audit Committee	
	Approval of 2015-16 Budget	
10:00 am	<u>Annual Reports from Standing Committee Chairs</u>	
	Annual Meeting Chair	Diane Oyen
	Elections	Yolanda King
	Archives	Mary Campbell
	Communications	Tinka Gammel
	Membership	Dana Roberson
	Fund Raising	Rebecca Galves
	Policies and Procedures	Jeanne Banks
	Publicity/Outreach	Barbara Torres
	Student Awards	Mercedes Agogino
	IMPACT! Award	Phyllis Baca
	Stem Outreach Liason	Cheri Burch
11:00	<u>Expanding Your Horizons: Annual Report</u>	
	State	Rebecca Galves
	Local Reports	Local Chairs
11:30	<u>NMNWSE Chapter Annual Reports</u>	
	Central	Jeanne Banks
	Northern	Jan Frigo
	Southern	Rebecca Galves
	Eastern - Inactive	
12:00	<u>Gavel Turn Over - Adjourn</u>	Phyllis Baca

Annual Business Meeting Action Items:

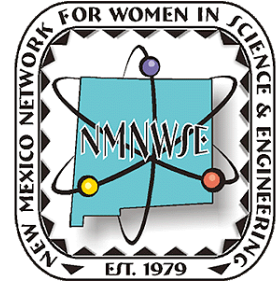
Date Opened	Open Action Items	Responsible	Status

New Mexico Network for Women in Science and Engineering

Oct Board Meeting – Draft Agenda (Subject to Change)

Date: 8:30 am, Sunday, October 25, 2015

Place: Sierra Grande Lodge, Truth or Consequences, NM



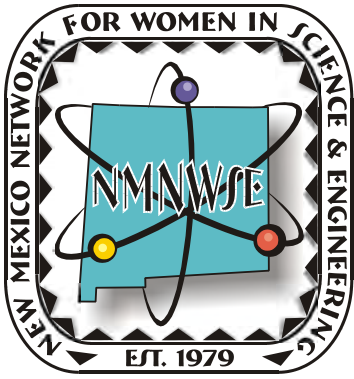
2015-16 OFFICERS:
 President -
 Vice President -
 Treasurer – Jeanne Banks
 Secretary -

Note: First meeting of the 2015-16 Board. Members are welcome to attend. Outgoing Board Members and Chairs should plan to attend, provide reports on activities since August Board Mtg, and pass on duties as appropriate.

8:30 am	<u>Topic</u>	<u>Presenter</u>
	Call to Order	New President
	Secretary's Report	New Secretary
	Treasurer's Report	Jeanne Banks
	Audit Committee	
	2015-16 Budget Review	Jeanne Banks
9:00 am	<u>Standing Committee Chairs</u>	
	Annual Meeting Chair	Diane Oyen
	Elections	Yolanda King
	Archives	Mary Campbell
	Communications	Tinka Gammel
	Membership	Dana Roberson
	Fund Raising	Rebecca Galves
	Policies and Procedures	Jeanne Bankes
	Publicity/Outreach	Barbara Torres
	Student Awards	Mercedes Agogino
	IMPACT! Award	Phyllis Baca
	STEM Outreach Liason	Cheri Burch
10:00	<u>Expanding Your Horizons</u>	
	State	Rebecca Galves
	Local Reports	Local Chairs
10:30	<u>NMNWSE Chapter</u>	
	Central	Jeanne Banks
	Northern	Jan Frigo
	Southern	Rebecca Galves
	Eastern - Inactive	
11:00	<u>Adjourn</u>	
		New President

Board Meeting Action Items:

Date Opened	Open Action Items	Responsible	Status



**NMNWSE AM 2015:
TECHNICAL SYMPOSIUM
& BUSINESS MEETING**

nmnwse.org/AM/2015

23-25 October 2015

**Sierra Grande Lodge and Spa
Truth or Consequences, NM**

Conference Hotel: (A)

Sierra Grande Lodge

Exits 79 (from north) and 75 (from south)
off I-25.

Poster Session

& Conf Dinner: (A)

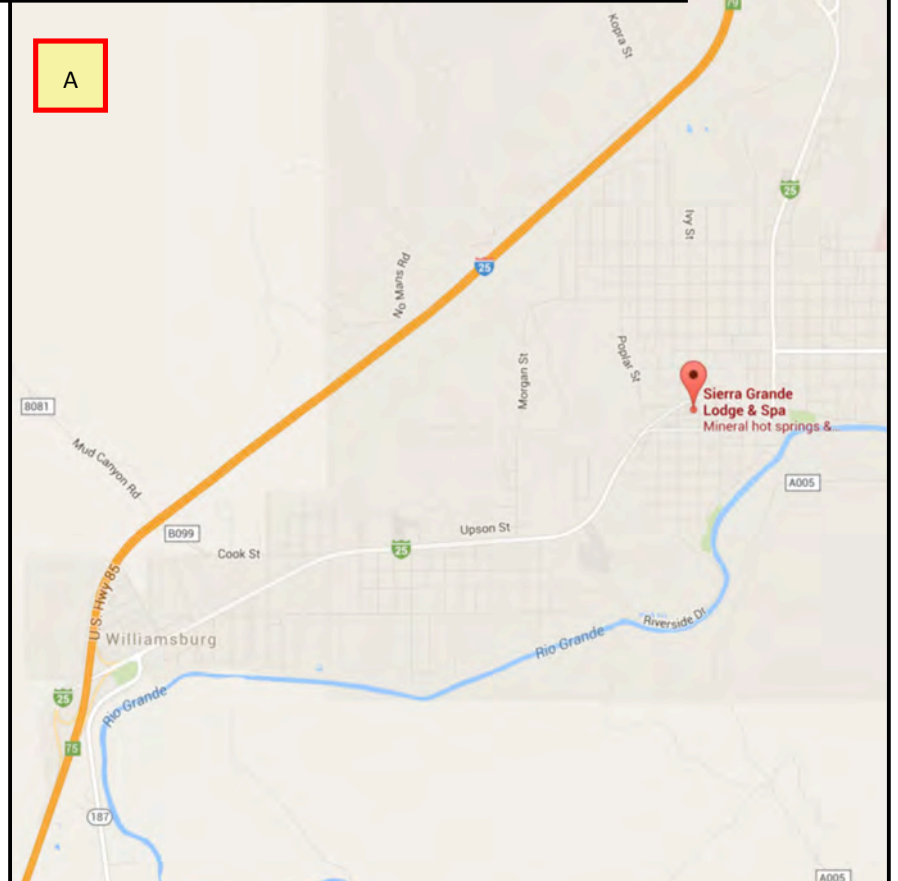
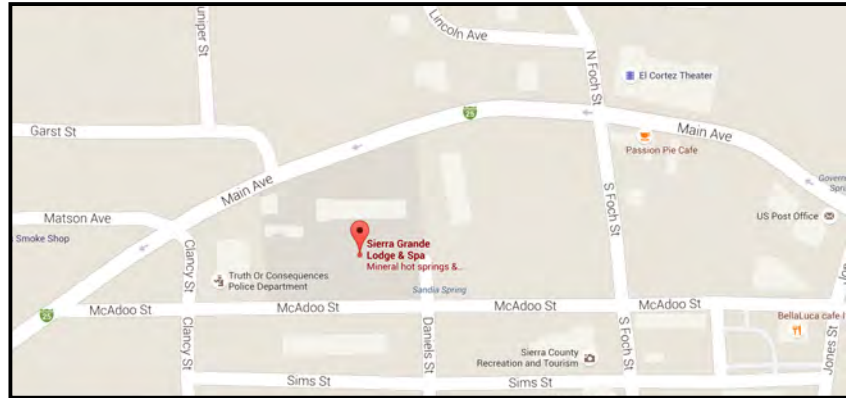
Sierra Grande Lodge

Featured Event: (B)

Geronimo Springs Museum

211 Main Ave

Truth or Consequences, NM 87901



New Mexico Network for Women in Science & Engineering
2015 Annual Meeting & Technical Symposium (AM 2015)
Sierra Grande Lodge and Spa, Truth or Consequences, NM
23-25 October 2015
<http://nmnwse.org/AM/2015>



AM 2015, Oct 24 Event Details and Abstracts

(Draft – subject to change. See maps page 4.)

Featured Events

❖ **Geronimo Springs Museum, 1:30 pm - 2:30 pm, T or C, NM**

The Geronimo Springs Museum has for over forty years been a repository of local history, displays, and educational information. A showcase for Sierra County and the area, this entity strives to make available permanent and rotating displays which enhance a visit to the Southwest, as well as encouraging other ventures while here: hot baths, ghost towns, the lakes, Art Hop, scenic drives, galleries, rodeos, and so much more.

Tours are available and take about 45 min. A couple days notice is needed to schedule.

<http://geronimospringsmuseum.com>

Phone: 575-894-6600

Email: info@geronimospringsmuseum.com

Posters Session,

❖ **Sofia Bali**, NMSU Undergraduate Research Assistant, sofibali@nmsu.edu

❖ **Nicole Price**, NMSU Undergraduate Research Assistant, nicolie8@nmsu.edu

The number of women in computing and other technological fields is exceedingly low, leaving females in computer science as a definite minority. Our team in the Young Women in Computing (YWiC) program continually researches the most effective method/s to grasp the attention of young students, particularly girls, and help them become interested in computing fields, as well as work with best practices to help boost the confidence of young girls and under-represented minorities, while recruiting them successfully into computer science.

The main focus of this Poster and research project is to decipher whether middle school students from grades 6th-8th prefer to create visually engaging computer programs using a drag-and-drop coding language versus building robots with the EV3 Lego Mindstorm Robotics kits, prior to programming. This Poster will also present data that assisted in determining useful recruiting tools to interest middle-school aged girls into computing and eventually into computer science related degree programs.

Featured Speakers, 7:40 pm – 9:00 pm,

❖ **Dr. Martha Mitchell**, Associate Dean - College of Engineering and Chemical Engineer, NMSU

❖ **Diane Oyen**, Los Alamos National Laboratory - Analyzing ChemCam Spectroscopy for Geochemical Signatures of Past Martian Atmosphere

The Curiosity rover landed in Gale Crater on Mars in 2012 and has been collecting a variety of data ever since. Geological information is gathered by the ChemCam instrument which produces remote micro images (RMI) for geologic context and laser-induced breakdown spectroscopy (LIBS) for chemistry data. With over 200,000 spectra already collected, there is more information than can be analyzed manually, offering a challenging opportunity for data scientists to help answer open-ended scientific questions from a rich data source.

The chemical analysis of surface layers on rocks can give us clues to the past atmospheric conditions of the planet and the LIBS instrument provides the necessary data of chemical depth profiles with successive laser shots. To analyze depth trends in martian rocks, we apply machine learning algorithms for graphical model structure learning to identify patterns representative of geological signatures.

Bio: Diane Oyen joined Los Alamos National Lab in 2013 as a Postdoc in the Machine Learning and Data Exploitation team. Her research interests include data mining for scientific discovery, interactive machine learning and information fusion. Much of her work involves using probabilistic graphical models to help scientists make sense of complex data.

❖ **MyChelle Andrews**, City of Albuquerque - How Open Data is Changing the Way Citizens and Government Work Together.

Abstract: It is now easier than ever to get information from your government. Using the Open Data concept, governments are sharing data and allowing anyone in the world to access it and use it in any way they want.

At the City of Albuquerque, our Open Data Portal, ABQ Data, has over 50 data sets that are available for use. But why would you want to use them?

Entrepreneurs can write an application (app) for a smart device to easily display the data and then sell the app or sell advertising that is displayed in the app. Students have all the data they need to research and write meaningful programs. Researchers are always looking for data to prove their point or to discover new relationships that exist between entities.

These three areas, Economic Development, Education, and Research are just a few examples of how open data is changing the way citizens and government work together. This presentation provides additional information about the technical aspects of the Open Data Portal and its varied uses.

